

# the EGYPT Centre

## What's On

May - August

2016

 Cymru  
Wales

Atyniad Ardystiedig  
Accredited Attraction

ACCREDITED  
MUSEUM



MUSEUMS LIBRARIES ARCHIVES  
COUNCIL



# Museum of Egyptian Antiquities



# Welcome

The Egypt Centre holds the **largest collection** of Egyptian antiquities in Wales, with over 2000 ancient objects on display.

 **tripadvisor**<sup>®</sup>  
Highly rated Museum in Swansea

Most of the artefacts are from the collection of Sir Henry Wellcome, however we also have objects on loan from other places such as the British Museum, Aberystwyth University, and Woking College.

**Entry to the museum is Free\***

**Open:\***

Tuesday—Saturday 10.00am — 4.00pm

**10.00am –5.00pm throughout August**

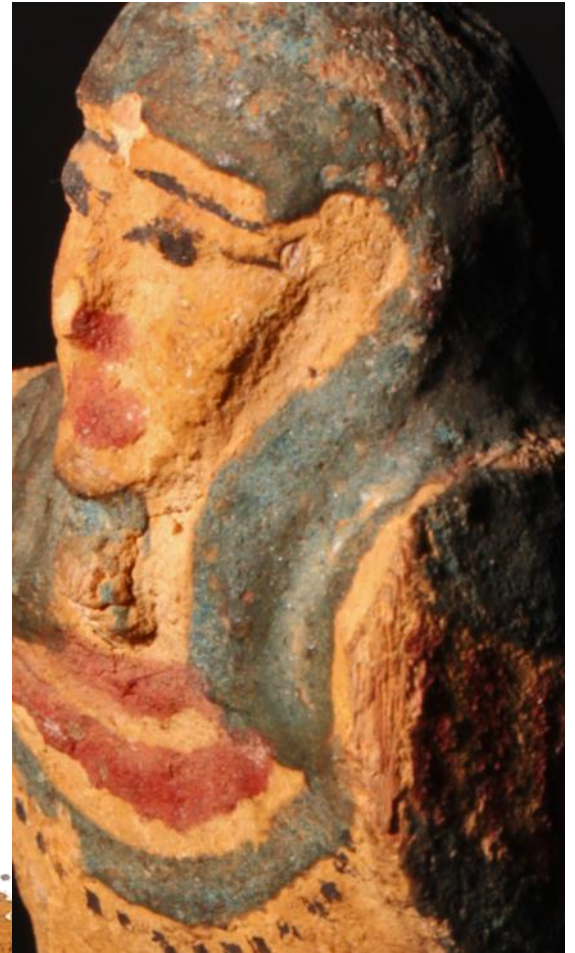


Egypt Centre  
Swansea University  
Singleton Park  
Swansea  
SA2 8PP

01792 295 960

[www.egypt.swan.ac.uk](http://www.egypt.swan.ac.uk)

\*Some events may carry a separate charge and may run outside regular museum opening hours.





# Daily Activities

The *House of Life* tells the story of everyday life in ancient Egypt displaying artefacts that were used on a daily basis including household furniture, children's toys, jewellery and clothing.

The *House of Death* explores the ancient Egyptian attitude to death and religion, with exhibitions that include mummified animals, magical amulets, death masks and even the book of the dead.

*'Been coming here for years,  
It never loses its Magic.  
Thank you!'*

## Free Public Activities

Play the ancient board game Senet, handle real ancient Egyptian artefacts and learn to write your name in ancient Egyptian hieroglyphs.

Try your hand at mummification as you practice on our 'dummy-mummy', or have a go at our colouring activities, themed trails and audio guides. You can even dress up and try on ancient Egyptian style clothing, so remember to **bring your camera!**

## Exploring Packs available to hire for just £1

Activity pack includes worksheets on topics including; writing hieroglyphs, mummification, animals and the gods of ancient Egypt.



# May



## Saturday 14th

*Museum by Torchlight*  
Museums at Night

As part of Museums at Night 2016 the Egypt Centre will be staying open late to offer you another chance to experience the galleries after hours.

With the gallery lights off and only the case lights on, you will get the chance to re-discover our great collection by torchlight.

Experience the excitement felt by explorers entering lost tombs for the first time in search of wonderful things hidden in the darkness.

**All Welcome**  
4pm—6pm  
**Free Event**



## Wednesday 18th

*Snakes Alive*  
Linda Steynor

EES Trustee Linda Steynor explores the use of figurative language in the enjoyable but enigmatic Ancient Egyptian poem, *The Tale of the Shipwrecked Sailor*.

She highlights issues of accessibility and appreciation and illustrates the hidden complexities of the Sailor's apparently simple 'tall tale', showing how his word-pictures offer a moral compass and provide a strategy for coping with the vicissitudes of life, as relevant now as for the Ancient Egyptians.

**Friends of the Egypt Centre**  
Swansea University  
Fulton House Room 2

**£3 for non members**  
**Annual Membership from £10**  
**Doors open at 6.30pm with**  
**talk starting at 7.00pm**



# June



## 31st May — 3rd June

### *Hidden Secrets*

### Half Term Workshop

Come and discover some of the ancient Egyptians most carefully guarded secrets.

Explore the galleries and find out how the ancient Egyptians tricked their gods, and cheated their way into the afterlife.

Discover what fakes were made to fool early explorers going to Egypt looking for treasures and make your very own secret Pyramid box to take home with you!

### Suitable for ages 6-10

Limited places Booking essential

### 1 day workshop

Children dropped off at 10am,  
collected at 3.00pm

**£20 for the day per child**

Early Bird Booking! Pay before 14th  
May and pay only £15 per child!



## 10th —11th

### *Volunteers Week*

### Open Days

As part of Volunteers' Week 2016, the Egypt Centre will be running an open day to showcase our talented and hugely valuable volunteers!

This is a great chance for those interested in volunteering to explore our galleries and meet some of our current adult volunteers on Friday 10th and some of our young volunteers on Saturday 11th.

Take the opportunity to find out what it's like to help run Wales' only museum of ancient Egyptian antiquities.

**All Welcome**

10am—4pm

Friday 3rd & Saturday 4th

**Free Event**



# June



**Wednesday 15th**

*Egypt in England*

**Chris Elliott, Member of Egypt  
Exploration Society**

More than two hundred years of the cultural legacy of Ancient Egypt, expressed through Egyptian style architecture in England. The What, Where, and Why of buildings ranging from mill to mausoleum and cinema to synagogue. Mock temples, pyramids, and obelisks.

As seen in TV Series *How London was Built*.

There will be an opportunity to purchase a signed copy of his book after the talk.

**Friends of the Egypt Centre**

Swansea University

Fulton House Room 2

**£3 for non members**

**Annual Membership from £10**

**Doors open at 6.30pm with**

**talk starting at 7.00pm**



# July

Join the curator of  
**Wales' only Egyptology Museum**  
New lecture series beginning **July 2016**



**Tuesday 5th July:**  
Introduction to coffins

**Friday 15th July:**  
Introduction to the royal city  
of Amarna

**Wednesday 20th July:**  
Tattoos, jewellery and other body  
adornment

**Thursday 28th July:**  
Introduction to the afterlife!

3-4pm  
The Egypt Centre  
Swansea University

Cost:

**Active Volunteers\***: Free  
**Non-Volunteers**: £5 per person

Spaces limited

To book or arrange to volunteer  
Phone 01792 295960

Email [egyptcentre@swansea.ac.uk](mailto:egyptcentre@swansea.ac.uk)  
or pop into the museum!

\* You must have volunteered at  
least 9 hours over the month prior  
to each talk and average 3 hours  
per week to qualify as an active  
volunteer



# August



**2nd—3rd / 4th—5th**  
**Roman Egypt**  
**Holiday Workshop Week 1**

Dress up and become a conquering Roman soldier as you discover what the Romans really did for ancient Egypt!

Learn about Roman mathematics, find out how the Romans changed mummification and see if you can match the ancient Egyptian gods to their new Roman counterparts! You will then get the chance to make your very own Roman mosaic!

**Suitable for ages**

**6-10** Limited places

Booking essential

**2 day workshop**

Tuesday–Wednesday OR

Thursday–Friday.

Children dropped off at 10am and picked up at 3.00pm each day.

**£35 per child for the two days!**



**9th—10th / 11th—12th**  
**Toys & Games**  
**Holiday Workshop Week 2**

Find out what it was like to be a child in ancient Egypt.

Discover the toys and games of ancient Egypt. Play the magical game of Senet which was loved by both the rich and the poor.

Learn about the importance of music as entertainment, discover the different types of instruments that were played and have a go at making your very own ancient Egyptian toy to take home with you!

**Suitable for ages 6-10**

Limited places Booking essential

**2 day workshop**

Tuesday–Wednesday OR

Thursday–Friday.

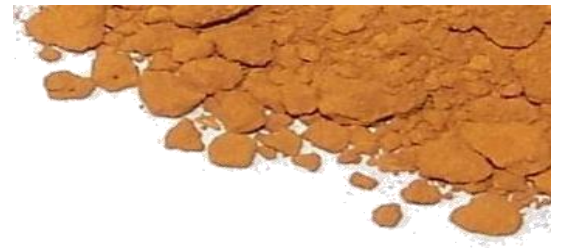
Children dropped off at 10am and picked up at 3.00pm each day.

**£35 per child for the two days!**





# August



## 16th—17th / 18th—19th *Gods and Demons* Holiday Workshop Week 3

Meet the many different gods and goddesses as you hear the an actual ancient Egyptian myth of Osiris god of the afterlife and learn all about lucky household demons.

Become the god Anubis as you carry out your own mummification and learn how to write your name in hieroglyphs from Thoth, the wisest of all the gods. Then make your own god or goddess statuette and a lucky demon amulet to keep.

**Suitable for ages 6-10** Limited places

Booking essential

**2 day workshop**

Tuesday–Wednesday OR  
Thursday–Friday. Children  
dropped off at 10am and  
picked up at 3.00pm each day.

**£35 per child for the two days!**



## 23rd—24th / 25th—26th *Pyramid Builders* Holiday Workshop Week 4

Discover how the ancient Egyptians really built the pyramids and made rock cut tombs for their Pharaohs.

Handle real artefacts as you learn about the tools and technology used thousands of years ago.

Use the same methods and materials as the ancient Egyptians to transform strips of the papyrus plant into the world's first paper. Then make your own sand dough blocks to build your very own model pyramids.

**Suitable for ages 6-10**

Limited places Booking essential

**2 day workshop**

Tuesday–Wednesday OR  
Thursday–Friday.

Children dropped off at 10am and  
picked up at 3.00pm each day.

**£35 per child for the two days!**



# Gift Shop

The Egypt Centre Gift Shop has a wide range of gifts perfect for the whole family!

## Jewellery

With a wide range of jewellery at great prices, including ranges by 'Sour Cherry', 'Seren's Charms' and 'IntheWitchWood'. These collections are inspired by ancient Egypt, and are given a modern twist.

## Gifts

You can find fine scarves, recycled Egyptian glass wear and replica Egyptian statues, just like the ones on display in our galleries!

## Souvenirs

We have a number of Egypt Centre branded items including torches, key rings and postcards.



## Toys

There's plenty to keep the children occupied, including a range of stationery, statues, toys, books, and games, as well as so much more!

**The Front of House & Gift Shop  
Manager Lauren Wale**

can be contacted directly on:

**01792 602660**

[l.j.thomson@swansea.ac.uk](mailto:l.j.thomson@swansea.ac.uk)





# Friends Membership

Starting from just **£10.00**, Friends of the Egypt Centre Membership is perfect for those who love ancient Egypt, history and museums - and you will be helping to support the Egypt Centre, Wales' only museum of Egyptian antiquities!

**The Friends of the Egypt Centre** organise an exciting programme of talks by museum professionals and Egyptologists each year, as well as visits to other museums, and other social events.

## Discover

Our monthly talks cover a wide range of topics from current museum exhibitions and practises to the latest theories and discoveries about ancient Egypt.

## Enjoy

Come along and share your thoughts, meet new people and make new friends at our talks and social events. As a member you will be eligible for discount in the museum gift shop during seasonal promotions.

## Support

As a Friends member, you will be helping to support the Egypt Centre, making sure our galleries stay open to the public and that the museum stays free of charge!

Be part of Wales' only museum of Egyptian antiquities.

For further information or to become a member please contact the **Membership Secretary**  
**Wendy Goodridge:**

01792 295960

[w.r.goodridge@swansea.ac.uk](mailto:w.r.goodridge@swansea.ac.uk)



# Volunteering

As a **volunteer** you can meet new friends, learn new skills, get on a career path, and have the satisfaction of helping run Wales' only museum of ancient Egypt!

The adult volunteer program runs Tuesday - Saturday, 10am - 4pm and is open to anyone **over the age of 18!**

We rely on volunteers to maintain our galleries, welcome our visitors, answer enquiries and give guided tours.

You can also volunteer as an educational leader for visiting school groups, become an admin assistant or even a documentation assistant working with the collection!

So what are you waiting for?  
Sign up as a volunteer  
**Today!**



We also offer **Free** Egyptology classes for our volunteers and give them the opportunity to handle artefacts usually on display within the museum or in storage.



If you would like to join us, or receive more information please contact the

**Volunteer Manager Syd Howells:**

Tel: 01792 606065

E-mail: [l.s.j.howells@swansea.ac.uk](mailto:l.s.j.howells@swansea.ac.uk)



# Young Volunteers



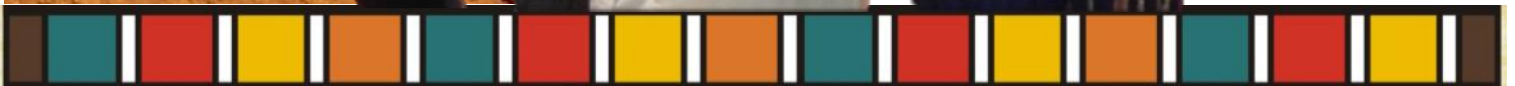
Any child aged 10-18 can become a **young volunteer**. You don't need to know anything about ancient Egypt or museums, but you do need an interest in history and heritage, and like working with lots of different people!

As a young volunteer you will become a **Gallery Assistant**. This means you will be looking after the galleries, talking with visitors and demonstrating our hands-on activities such as mummification.

The young volunteer programme runs 10am—4pm every **Saturday**, and during school holidays. Morning, afternoon and full day shifts available.



No other museum in the **UK** is run by young people so completely!



# Taliesin Cafe



## Opening Times\*

**Mon-Fri 10:00 — 6:00**

**Saturday 11:00 — 3:00**

**Café closed during August!**



## Enjoy a spot of lunch

Delicious food served daily including, pasta, ploughman's lunch, sandwiches, wraps, homemade soup and even full roast dinners!

## Perfect for a short break

Enjoy a hot cup of coffee, tea or hot chocolate with a nice handmade cake.

# Taliesin



\*Occasionally the café may be closed to the public due to conference booking. Please contact catering on 01792 295559 to check before your visit.

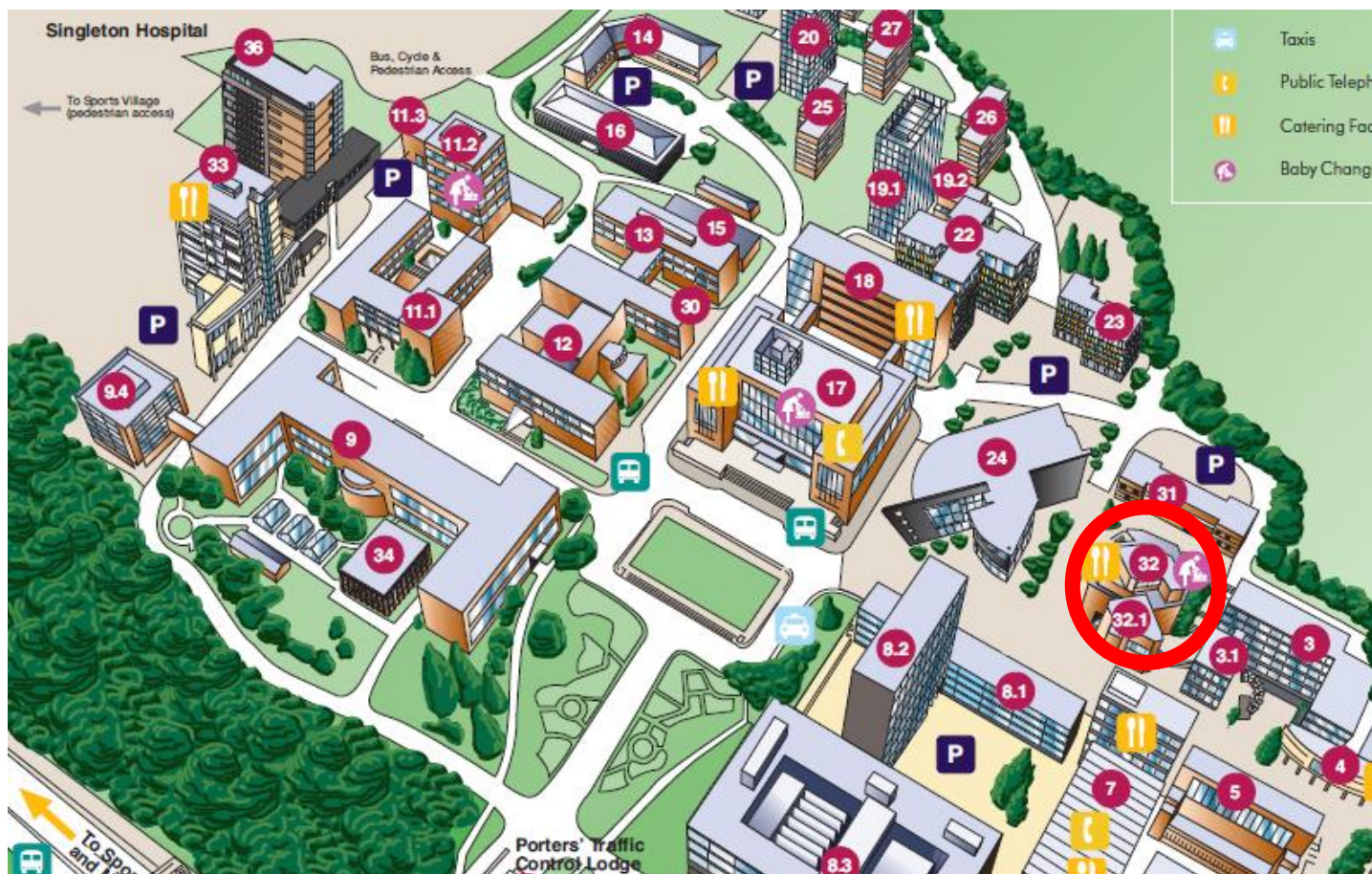
Disabled toilets available as well as baby changing facilities.



# Plan your visit

## Where to find us

The Egypt Centre is situated on Swansea University **Singleton** Campus, and is part of the Taliesin building (Number 32 / 32.1 on map).



## Arriving by bus

Please see the First Cymru website for full details.

Bus numbers 2A, 3A, 4 and 82A depart from the Quadrant Bus Station for the University's Singleton Park Campus and return at regular intervals.

## Parking

The University must advise only disabled visitors are able to park on Campus itself. All other vehicles may park in Swansea's Recreation Ground Car Park (approximately 500m walk away), or at the Pub on the Pond.



Swansea University  
Prifysgol Abertawe





*t h e*  
**EGYPT**  
*c e n t r e*  
*y g a n o l f a n*  
**EIFFTAIDD**



**Entry to the museum is Free\***

**Open:\***

Tuesday—Saturday 10.00am — 4.00pm

Egypt Centre  
Swansea University  
Singleton Park  
Swansea  
SA2 8PP

01792 295 960

[www.egypt.swan.ac.uk](http://www.egypt.swan.ac.uk)

\*Some events may carry a separate charge and may run outside regular museum opening hours.



**Highly rated museum in Swansea.**

